



May 8, 2026

Maya Goldman, P.E.  
Metropolitan North Georgia Water Planning District  
229 Peachtree St NE, Suite 100  
International Tower  
Atlanta, Georgia 30303

RE: Line Creek Withdrawal Permit  
Senoia, Georgia  
H&A File No. 6085-020

Dear Maya:

Hofstadter & Associates, Inc. (H&A) respectfully submits this letter on behalf of the City of Senoia to formally request an amendment to the Metropolitan North Georgia Water Planning District ***“Water Resources Management Plan (December 2022)”*** (WRMP). Specifically, we request that the amendment revise the WRMP Appendix B County-Level Summaries for Senoia under the Coweta County – Water heading. The requested changes include two (2) subjects: (1) The current and planned 2040 groundwater withdrawal allocation from the Crystalline Rock Aquifer will be reduced from 0.233 mgd to 0.119 mgd to match the EPD permit; and (2) The planned 2040 surface water withdrawal allocation will be increased by 1.5 mgd from a new Line Creek intake structure and water treatment plant. The requested changes will be shown in more detail in the ***“Amendment Request Description”*** section of this letter.

### **Background**

The City of Senoia is currently in a multi-year planning process to ensure that adequate water and wastewater infrastructure is available for existing and future populations, including residential, non-residential, and industrial users. The City recognizes that it is critical to coordinate with both Georgia EPD and with the Metropolitan North Georgia Water Planning District when planning for long-range infrastructure upgrades. The City submitted a Surface Water Withdrawal Permit Application to Georgia EPD on July 2, 2025 for a potential new site. The City now desires to request an amendment to the WRMP that aligns with the surface water withdrawal permit application. Much of the supporting information found within this request letter was originally published by H&A in an accompanying document for the EPD permit application process. The document is titled ***“Addendum No. 1 – Surface Water Withdrawal Permit Application [Line Creek] for the City of Senoia, Georgia”*** (October 2025).

### **Status of Groundwater Wells**

A well summary is presented below.



Well No.	Location	Status
#1	Pylant Street	De-commissioned
#2	Renwick Drive	In-service
#3	Renwick Drive	De-commissioned due to iron bacteria
#4	Renwick Drive	In-service

The current practical capacity of the two (2) operational wells is approximately 0.080 mgd.

The WRMP Appendix B Summary of Planned Sources allocates 0.233 mgd of groundwater wells (from the Crystalline Rock Aquifer) for both the “Current” and “Planned 2040” time periods. Likewise, the Phasing Plan allocates 0.233 mgd of Groundwater for both the “Existing” and “By 2040” time periods. However, Georgia EPD issued Groundwater Withdrawal Permit No. 038-0006 on January 27, 2025 (see enclosure) that authorizes 0.119 mgd monthly average and 0.119 mgd annual average. The new permit reflects the de-commissioning of two wells.

Based on City experience with Wells #1 and #3, trends indicate that future production from Wells #2 and #4 may completely fail.

*(a) February 2026 Action*

The City of Senoia shut the two (2) remaining groundwater wells off at the end of February 2026 because of water quality issues. City personnel plan to leave them off indefinitely.

**Description of Reservoir and Water Treatment Plant**

Hutchins Lake serves as Senoia’s reservoir which supplies raw water to the water treatment plant. Georgia EPD authorizes the City to withdraw surface water from the reservoir at the rate of 0.300 mgd daily maximum and 0.300 mgd monthly average under Surface Water Withdrawal Permit No. 038-1102-05 (see enclosure). Georgia EPD reduced the permitted intake capacity from 0.450 mgd to 0.300 mgd in previous permit cycles because of the effects of sediment accumulation in the reservoir.

Georgia EPD authorizes the Senoia Water Treatment Plant (WTP) to treat 0.450 mgd under Permit-to-Operate-a-Public-Water-System No. CS00770003 (see enclosure). It is noted that the full treatment plant capacity cannot be utilized since the permitted surface water withdrawal amount is limited to 0.300 mgd.

**12-Month Production Records**

Senoia has several reliable drinking water supply sources to provide potable water to the water system’s customers. These sources include finished water from:

- Senoia Water Treatment Plant
- Senoia Groundwater Wells
- Coweta County Water and Sewerage Authority (CCWSA)



(a) Year 2024 Production

City of Senoia water production numbers for Year 2024 are presented below.

Month	WTP Production	Well Production	Total City Production	County Purchase	Total	Avg. Daily Demand
January 2024	6,190,771	1,998,700	8,189,471	6,539,974	14,729,445	475,143
February 2024	5,433,346	1,528,300	6,961,646	5,302,114	12,263,760	422,888
March 2024	5,980,700	2,660,200	8,640,900	4,319,635	12,960,535	418,082
April 2024	6,353,659	2,784,300	9,137,959	6,081,524	15,219,483	507,316
May 2024	6,278,963	647,600	6,926,563	11,293,873	18,220,436	587,756
June 2024	5,091,968	2,374,400	7,466,368	14,963,995	22,430,363	747,679
July 2024	5,359,259	2,580,100	7,939,359	11,316,169	19,255,528	621,146
August 2024	5,544,538	2,631,200	8,175,738	12,490,593	20,666,331	666,656
September 2024	5,997,101	2,202,200	8,199,301	10,334,464	18,533,765	617,792
October 2024	7,286,014	2,454,300	9,740,314	8,174,362	17,914,676	577,893
November 2024	7,427,527	2,441,800	9,869,327	4,438,629	14,307,956	476,932
December 2024	6,614,770	2,463,100	9,077,870	0	9,077,870	292,835
<b>Total</b>	<b>73,558,616</b>	<b>26,766,200</b>	<b>100,324,816</b>	<b>95,255,332</b>	<b>195,580,148</b>	<b>534,372</b>
Daily Average	200,980	73,132	274,112	260,260	534,372	

**NOTES**

- (1) Production / Purchase / Total units: (gallons)
- (2) Avg. Daily Demand units: (gallons per day)

(a) Year 2025 Production

City of Senoia water production numbers for Year 2025 are presented below.

Month	WTP Production	Well Production	Total City Production	County Purchase	Total	Avg. Daily Demand
January 2025	6,112,502	243,200	6,355,702	6,731,272	13,086,974	422,160
February 2025	5,379,978	789,500	6,169,478	6,054,053	12,223,531	436,555
March 2025	7,810,160	2,697,100	10,507,260	2,896,197	13,403,457	432,370
April 2025	7,127,161	2,684,500	9,811,661	5,440,739	15,252,400	508,413
May 2025	7,138,810	2,771,300	9,910,110	6,059,612	15,969,722	515,152
June 2025	7,833,719	2,660,000	10,493,719	6,106,445	16,600,164	553,339
July 2025	8,355,600	2,649,936	11,005,536	5,972,099	16,977,635	547,666
August 2025	8,389,480	2,566,900	10,956,380	4,682,120	15,638,500	504,468
September 2025	8,342,559	2,468,600	10,811,159	7,525,200	18,336,359	611,212
October 2025	8,924,758	2,510,900	11,435,658	7,282,182	18,717,840	603,801
November 2025	8,743,377	2,470,300	11,213,677	3,273,714	14,487,391	482,913
December 2025	8,509,765	2,550,900	11,060,665	2,798,516	13,859,181	447,070
<b>Total</b>	<b>92,667,869</b>	<b>27,063,136</b>	<b>119,731,005</b>	<b>64,822,149</b>	<b>184,553,154</b>	<b>505,625</b>
Daily Average	253,885	74,146	328,030	177,595	505,625	

**NOTES**

- (1) Production / Purchase / Total units: (gallons)
- (2) Avg. Daily Demand units: (gallons per day)



**Production vs. Current Demand Analysis**

The production records show that Senoia’s production capacity is in deficit relative to the current system demand. The Year 2024 deficit is shown to be 0.260 mgd, and the Year 2025 deficit is 0.177 mgd. The production shortfall is fulfilled by importing finished water from an outside source – CCWSA. Without new production capacity, the deficit will grow over time as system demand increases and as the groundwater well production is reduced.

**(a) Year 2024 Deficit**

The Year 2024 minimum theoretical deficit of 0.115 mgd is calculated as the amount of finished water required to be imported if the WTP and groundwater wells operated at full capacity. (Similar calculations could be performed for other time periods that would yield similar results.)

$$\text{Min. Theoretical Deficit} = [\text{Year 2024 Demand}] - [\text{Production Capacity}]$$

With,

$$\text{Year 2024 Demand} = 0.534 \text{ mgd}$$

$$\begin{aligned} \text{Production Capacity} &= [\text{WTP Capacity}] + [\text{Groundwater Well Capacity}] \\ &= 0.300 \text{ mgd} + 0.119 \text{ mgd} \\ &= 0.419 \text{ mgd} \end{aligned}$$

$$\begin{aligned} \text{Min. Theoretical Deficit} &= 0.534 \text{ mgd} - 0.419 \text{ mgd} \\ &= 0.115 \text{ mgd} \end{aligned}$$

The Year 2024 theoretical deficit increases to 0.234 mgd if the groundwater well capacity is reduced to 0.000 mgd under a “wells-completely-failed” scenario.

**(b) Year 2025 Deficit**

The Year 2025 minimum theoretical deficit of 0.086 mgd is calculated below.

$$\text{Min. Theoretical Deficit} = [\text{Year 2025 Demand}] - [\text{Production Capacity}]$$

With,

$$\text{Year 2025 Demand} = 0.505 \text{ mgd}$$

$$\text{Production Capacity} = 0.419 \text{ mgd (see previous section)}$$

$$\begin{aligned} \text{Min. Theoretical Deficit} &= 0.505 \text{ mgd} - 0.419 \text{ mgd} \\ &= 0.086 \text{ mgd} \end{aligned}$$

The Year 2025 theoretical deficit increases to 0.205 mgd if the groundwater well capacity is reduced to 0.000 mgd under a “wells-completely-failed” scenario.



(c) Conclusion

Because the water treatment plant and the groundwater wells cannot produce water at 100% efficiency on an annual basis, the actual deficit will exceed the minimum theoretical deficit.

The actual production records and the theoretical deficit calculations summarized below show that the City of Senoia needs additional finished water production capability at the present time and in the future to overcome the deficit.

Year	Demand (mgd)	Min. Theoretical Deficit (mgd)	Min. Theoretical Deficit w/o Wells (mgd)	Actual Deficit (mgd)
2024	0.534	0.115	0.234	0.260
2025	0.505	0.086	0.205	0.177

Population Demand Projections

The U.S. Census Bureau website data shows historical populations. The retrieved data is summarized below.

Population Data - (Senoia & Coweta Co.)

Year	Senoia Population	Coweta County Population	Senoia Pop. / Coweta Pop. (%)	Source of Data
1990	956	53,853	1.78%	U.S. Census Bureau
2000	1,738	89,215	1.95%	
2010	3,307	127,317	2.60%	
2020	5,016	146,158	3.43%	

Different planning organizations, including the Metropolitan North Georgia Water Planning District (MNGWPD), the Atlanta Regional Commission (ARC), and the Georgia Governor’s Office of Planning and Budget (OPB), have developed future population projections for Coweta County. For long-range planning purposes, the City of Senoia population will be estimated by assigning a share of the Coweta County population. The city share will be estimated to increase from the Year 2020 share of 3.43% to a Year 2060 share of 5.0% over the planning period. The low- and high- range projections are shown below.

**Population Projections - (Senoia & Coweta Co.)**

Year	Coweta County		Assigned Share	Senoia	
	Low-Range	High-Range		Low-Range	High-Range
2030	172,938	189,442	3.823%	6,611	7,241
2040	190,688	224,105	4.215%	8,037	9,446
2050	204,078	255,714	4.608%	9,403	11,782
2060	213,847	290,192	5.000%	10,692	14,510

**Sources**

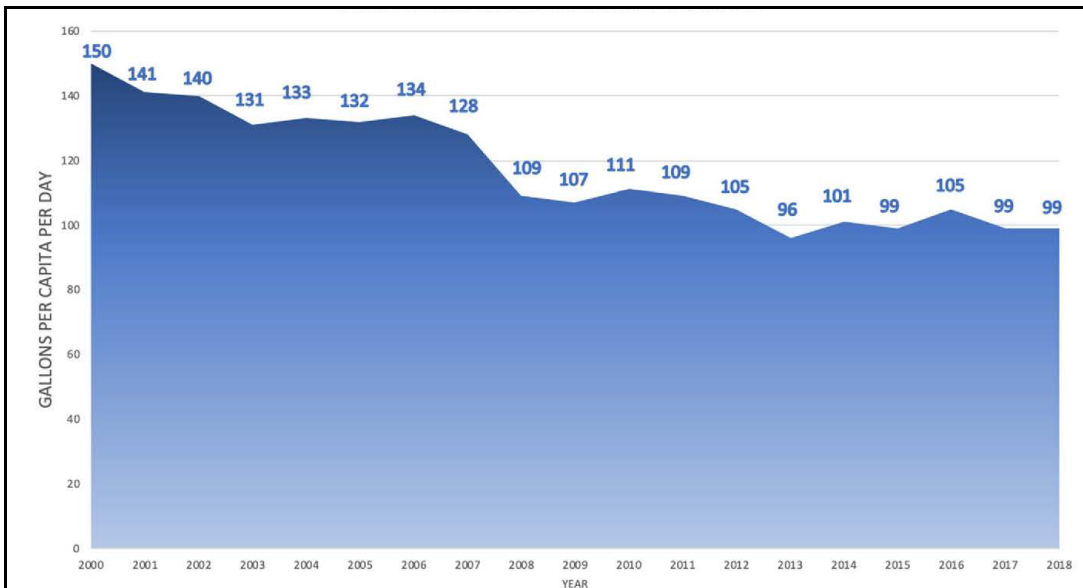
- (1) Georgia Governor's Office of Planning and Budget (OPB) website / "Population Projections Visualization" tab
- (2) Atlanta Regional Commission (ARC) & OPB data published by MNGWPD "WRMP" (Dec. 2022) -- Table 4-1

**Water Demand Projections**

The Senoia water demand estimate will be calculated as [the estimated future population] x [the per capita water demand]. The following per capita water demand estimating approaches are analyzed to determine a flow range.

*(a) Published Planning Document Estimate*

The WRMP Figure 3-2 (reproduced below) shows a per capita water demand of 99 gallons per capita per day (gpcpd) for the entire District.



**Figure 3-2. District Per Capita Water Use Trend 2000-2018**

*Note: This gallons per capita per day (GPCPD) calculation is the sum of all municipal and industrial demands in the District divided by the population of the District. It accounts for water sales into and out of the District. Note that population is based upon the latest estimated census values (last visited June 18, 2020).*



(b) Published Planning Document Water Demand Forecasts Divided by the Forecasted Population  
 The WRMP Tables 4-1 and 4-2 provide county level population projections and water demand forecasts. For planning purposes, it is assumed that water demand for Senoia users will match the county-wide demand. See the per capita estimates below.

Category	2040 (OPB High)	2060 (ARC)	2060 (OPB High)
Coweta County Demand (AADF-MGD)	20.7	21.0	27.3
Population Estimate	224,105	223,397	290,192
Per Capita Water Demand (GPCPD)	93	94	94

(c) Actual Current Water Production Divided by the Estimated Current Population  
 Based on the actual 2024 production volume, and based on the most-current population estimate from the 2020 Census, the per capita water demand is calculated below.

$$\begin{aligned}
 [\text{Per capita water demand, GPCPD}] &= [\text{Average daily demand, gpd}] / [\text{Population}] \\
 &= [534,372 \text{ gpd}] / [5,016] \\
 &= 107 \text{ GPCPD}
 \end{aligned}$$

Projections

The low- and high-range per capita water demand estimates (i.e., 93 -to- 107 gpcpd) will be applied to the low- and high-range population forecasts to determine a planning estimate for the future. The projected average water demand estimate ranges between 0.994 mgd and 1.552 mgd at Year 2060. It is noted that certain days, including the peak day, will be above the average demand.



**Average Flow Demand Projections - (Senoia)**

Year	Population	Per capita Demand (GPCPD)	Total Water Demand (gpd)
<b><i>Low-Population / Low Per Capita Demand</i></b>			
2030	6,611	93	614,823
2040	8,037	93	747,441
2050	9,403	93	874,479
2060	10,692	93	994,356

High-Range	Per capita Demand (GPCPD)	Total Water Demand (gpd)
<b><i>Low-Population / High Per Capita Demand</i></b>		
6,611	107	707,377
8,037	107	859,959
9,403	107	1,006,121
10,692	107	1,144,044

<b><i>High-Population / Low Per Capita Demand</i></b>			
2030	7,241	93	673,413
2040	9,446	93	878,478
2050	11,782	93	1,095,726
2060	14,510	93	1,349,430

<b><i>High-Population / High Per Capita Demand</i></b>		
7,241	107	774,787
9,446	107	1,010,722
11,782	107	1,260,674
14,510	107	1,552,570

**Infrastructure Upgrade Concept Planning**

The City of Senoia plans to upgrade the water production infrastructure to meet the existing and future needs. The improvements envision increasing both the surface water withdrawal capacity and the water treatment capacity. Groundwater wells will be kept in service as long as practical before they are de-commissioned, if necessary. **The long-range plan is to add additional surface water withdrawal capacity and treatment capacity equal to 1.5 mgd**

A second surface water withdrawal site will provide additional raw water capacity as well as redundancy to protect against service interruptions at the existing site. Additional treatment capacity will be constructed in phases over the planning period. For example, a new 1.5 mgd WTP could be constructed either at the same site as the existing facility or at a new site near the proposed surface water withdrawal structure. The new WTP could be constructed in phases, such as two (2) 0.750 mgd phases. However, the raw water transmission main would be sized to transport flows from the intake structure to the WTP for both the initial and ultimate phases.

An estimated project timeline for the new surface water withdrawal intake structure and the initial WTP addition is presented below. The timeline forecasts the start of construction in Year 2029 with facility commissioning in Year 2030.

- Planning, including Land Acquisition – 12 months
- Design – 12 months
- Permitting – 6 months
- Financing / Funding – 6 months
- Capital Project Construction – 12 months



**Description of Proposed Intake Site #2**

The City of Senoia is at the planning-level stage of seeking a second surface water withdrawal site (Intake Site #2). The active permit application on file with Georgia EPD envisions Intake Site #2 on Line Creek at State Route 74/85. However, the City is still considering other potential locations within the Line Creek Basin for Intake Site #2. If the City selects another site, then the Surface Water Withdrawal Permit Application on file at EPD will be amended, and a new Safe Yield Analysis will be performed to verify that sufficient stream flow is available.

**Amendment Request Description**

The City of Senoia requests that MNGWPD amend the Appendix B County-Level Water Summary for Coweta County. Our recommended summaries are shown below.

**Summary of Planned Sources**

Source	Local Water Provider	<del>Current Permitted Withdrawal Monthly Average (MGD)</del>	<del>Planned 2040 Withdrawal (MGD)</del>		Current Permitted Withdrawal Monthly Average (MGD)	Planned 2040 Withdrawal (MGD)	
		<del>Monthly</del>	<del>Peak Day</del>	Monthly		Peak Day	
Hutchins Lake (Keg Creek)	Senoia	<del>0.3</del>	<del>0.34</del>	<del>0.45</del>	0.3	0.3375	0.45
Intake Site #2 (Line Creek Basin)		<del>---</del>	<del>---</del>	<del>---</del>	0	1.125	1.5
Crystalline Rock Aquifer		<del>0.233</del>	<del>0.233</del>	<del>0.233</del>	0.119	0.119 (A)	0.119 (A)

Notes:

(A) Groundwater wells will remain in service as long as practical.

**Phasing Plan**

Facilities	<del>Existing Permitted Plant Capacity (PD-MGD)</del>	<del>Plant Capacity at End of Period (PD-MGD)</del>	Existing Permitted Plant Capacity (PD-MGD)	Plant Capacity at End of Period (PD-MGD)
<b>Flint Basin</b>				
Senoia WTP	<del>0.45</del>	<del>0.45</del>	0.45	0.45
Proposed Senoia WTP #2	<del>---</del>	<del>---</del>	0	1.5
<b>Groundwater</b>				
Senoia	<del>0.233</del>	<del>0.233</del>	0.119	0.119 (A)

Notes:

(A) Groundwater wells will remain in service as long as practical.

There is no need to amend the wastewater summary at this time.



If you should have any questions or need additional information, please don't hesitate to call.

Sincerely,

HOFSTADTER AND ASSOCIATES, INC.

A handwritten signature in blue ink that reads 'John Fry'.

John B. Fry, Jr., P.E.  
Project Engineer

Cc: Jessie Cox, w/ Encl.

- Encl. (1) Groundwater Withdrawal Permit No. 038-0006  
(2) Surface Water Withdrawal Permit No. 038-1102-05  
(3) Permit-to-Operate-a-Public-Water-System No. CS00770003

**COWETA COUNTY - WATER (Page 1 of 2)**

**Summary of Planned Sources**

Source	Local Water Provider	Current Permitted Withdrawal Monthly Average (MGD)	Planned 2040 Withdrawal (MGD) (Note 1)	
			Monthly (Note 2)	Peak Day
B.T. Brown Reservoir (Notes 3, 4, 5)	CCWSA	6.7	22.1	26.9
Chattahoochee River (Notes 3, 4, 5, 6)		Fills B.T. Brown Reservoir		
J.T. Haynes Reservoir	Newnan	14.0	14.0	18.6
Sandy Brown Creek		Fill J.T. Haynes Reservoir only		
White Oak Creek (Flint River)				
Line Creek (Flint River)				
Hutchins Lake (Keg Creek)	Senoia	0.3	0.34	0.45
Crystalline Rock Aquifer		0.233	0.233	0.233
Crystalline Rock Aquifer	CCWSA	0.504	0.504	0.504
<b>Total Withdrawal (MGD)</b>		<b>21.7</b>	<b>37.1</b>	<b>46.7</b>

Notes:

- 2040 Planned Withdrawal reflects proposed plant capacities needed to accommodate projected water demands and incremental plant expansions.
- Monthly is calculated by dividing Peak Day by 1.33, unless otherwise listed in current permits.
- The B.T. Brown Reservoir and pumping system will be capable of providing 26.9 MGD at 2040. The water intake pump station and raw water transmission main from the Chattahoochee River will have the capacity to pump at a peak rate of 21.3 MGD at 2040. The buildout capacity will be constructed in phases as demands increase.
- The withdrawal from the Chattahoochee River is to be pumped into B.T. Brown Reservoir for storage prior to treatment. The withdrawal from B.T. Brown Reservoir is taking water previously removed from the Chattahoochee River for treatment. As water demand continues to increase, CCWSA may seek additional storage to its reservoir system.
- The withdrawals from the Chattahoochee River and B.T. Brown Reservoir are to serve as a replacement for an existing water source from a small tributary of the Chattahoochee River, which has proven its inability as a resilient water source in most recent droughts of record. This proposed Chattahoochee River withdrawal will allow the Authority to supply demands previously served by outside water providers and increase the resilience of its water supply.
- The Chattahoochee River pump rate of 21.3 MGD for 2040 is required to help fill the B.T. Brown Reservoir. This withdrawal is not additive and is thus not included in the Total Withdrawal for Coweta County.

**Summary of Needs**

Water Demands & Capacities	2040 Peak Day Demand (PD-MGD) (Note 7)
Coweta County Needs	33.1
Self Supplied	-1.6
From Fulton County (City of Atlanta) (Note 8)	0.0
From Griffin's Still Branch Reservoir (Note 8)	-5.0
<b>Total Projected Demand from Facilities (PD-MGD)</b>	<b>26.4</b>
Treatment Capacity	46.7
<b>Total Projected Demand from Facilities (AADF-MGD)</b>	<b>2040 (AADF-MGD)</b>
	20.7

Notes:

- District-wide planning peak day factor is 1.6 times annual average day.  
 For local system planning, the highest peak day factor was 1.56 from 2011 to 2019 in this County.
- Coweta County Water and Sewer Authority (CCWSA) is seeking a permit from Georgia EPD to have a direct withdrawal from the Chattahoochee River. If that water withdrawal is permitted and constructed, CCWSA would no longer purchase from the City of Atlanta. In either scenario, total withdrawals from the Chattahoochee will not be affected. In the event that a withdrawal permit is obtained, the connection with the City of Atlanta will be maintained for emergency service.
- The Still Branch Creek Reservoir is located outside of the District and is owned by the City of Griffin in Spalding County. The reservoir serves Pike and Spalding Counties as well as Coweta County. Coweta County has a purchase contract for 3.0 PDD-MGD of finished water (2012) from the City of Griffin which increases to 5.0 PDD-MGD on July 1, 2022.

**COWETA COUNTY - WATER (Page 2 of 2)**

**Phasing Plan**

Facilities (Note 10)	Existing (2021) Permitted Plant Capacity (PD-MGD)	By 2040 Plant Capacity at End of Period (PD-MGD)
<b>Chattahoochee Basin</b>		
CCWSA B.T. Brown WTP (Note 11)	6.4	26.9
<b>Chattahoochee/Flint Basins</b>		
Newnan Hershall Norred WTP	14.0	18.6
<b>Flint Basin</b>		
Senoia WTP (Note 12)	0.45	0.45
<b>Groundwater</b>		
Senoia	0.233	0.233
CCWSA Murphy Well	0.504	0.504
<b>Total Capacity (PD-MGD)</b>	<b>21.6</b>	<b>46.7</b>

Notes:

- 10) The schedule shown above is intended to be a general guideline to identify general expansion needs. Expansion capacity may be required sooner or later than indicated depending on local population and employment growth, water service extensions and other planning variables. Specific conditions for withdrawal and operation permits will be determined by Georgia EPD.
- 11) The B.T. Brown WTP should be expanded to 26.9 PD-MGD by 2040 to fully utilize the yield of B.T. Brown Reservoir.
- 12) The City of Senoia has a withdrawal permit with a monthly limit of 0.3 MGD from Hutchins Lake and a WTP with a total capacity of 0.45 PD-MGD. The City will need to increase their water withdrawal permit in order to fully utilize the plant capacity.

**Interconnections**

Maintain existing interconnections and water supply agreements with City of Atlanta, City of Griffin and additional interconnections as necessary.

**COWETA COUNTY - WATER (Page 1 of 2)**

**Summary of Planned Sources**

Source	Local Water Provider	Current Permitted Withdrawal Monthly Average (MGD)	Planned 2040 Withdrawal (MGD) (Note 1)	
			Monthly (Note 2)	Peak Day
B.T. Brown Reservoir (Notes 3, 4, 5)	CCWSA	6.7	22.1	26.9
Chattahoochee River (Notes 3, 4, 5, 6)		Fills B.T. Brown Reservoir		
J.T. Haynes Reservoir	Newnan	14.0	14.0	18.6
Sandy Brown Creek		Fill J.T. Haynes Reservoir only		
White Oak Creek (Flint River)				
Line Creek (Flint River)				
Hutchins Lake (Keg Creek)	Senoia	0.3	0.34	0.45
Line Creek (Flint River)		0	1.125	1.5
Crystalline Rock Aquifer (Note 13)		<del>0.233</del> 0.119	<del>0.233</del> 0.119	<del>0.233</del> 0.119
Crystalline Rock Aquifer	CCWSA	0.504	0.504	0.504
<b>Total Withdrawal (MGD)</b>		<b>21.7</b>	<del>37.1</del> 38.2	<del>46.7</del> 48.1

Notes:

- 1) 2040 Planned Withdrawal reflects proposed plant capacities needed to accommodate projected water demands and incremental plant expansions.
- 2) Monthly is calculated by dividing Peak Day by 1.33, unless otherwise listed in current permits.
- 3) The B.T. Brown Reservoir and pumping system will be capable of providing 26.9 MGD at 2040. The water intake pump station and raw water transmission main from the Chattahoochee River will have the capacity to pump at a peak rate of 21.3 MGD at 2040. The buildout capacity will be constructed in phases as demands increase.
- 4) The withdrawal from the Chattahoochee River is to be pumped into B.T. Brown Reservoir for storage prior to treatment. The withdrawal from B.T. Brown Reservoir is taking water previously removed from the Chattahoochee River for treatment. As water demand continues to increase, CCWSA may seek additional storage to its reservoir system.
- 5) The withdrawals from the Chattahoochee River and B.T. Brown Reservoir are to serve as a replacement for an existing water source from a small tributary of the Chattahoochee River, which has proven its inability as a resilient water source in most recent droughts of record. This proposed Chattahoochee River withdrawal will allow the Authority to supply demands previously served by outside water providers and increase the resilience of its water supply.
- 6) The Chattahoochee River pump rate of 21.3 MGD for 2040 is required to help fill the B.T. Brown Reservoir. This withdrawal is not additive and is thus not included in the Total Withdrawal for Coweta County.

**Summary of Needs**

Water Demands & Capacities	2040 Peak Day Demand (PD-MGD) (Note 7)
Coweta County Needs	33.1
Self Supplied	-1.6
From Fulton County (City of Atlanta) (Note 8)	0.0
From Griffin's Still Branch Reservoir (Note 8)	-5.0
<b>Total Projected Demand from Facilities (PD-MGD)</b>	<b>26.4</b>
Treatment Capacity	46.7
<b>Total Projected Demand from Facilities (AADF-MGD)</b>	<b>2040 (AADF-MGD)</b>
	20.7

Notes:

- 7) District-wide planning peak day factor is 1.6 times annual average day.  
 For local system planning, the highest peak day factor was 1.56 from 2011 to 2019 in this County.
- 8) Coweta County Water and Sewer Authority (CCWSA) is seeking a permit from Georgia EPD to have a direct withdrawal from the Chattahoochee River. If that water withdrawal is permitted and constructed, CCWSA would no longer purchase from the City of Atlanta. In either scenario, total withdrawals from the Chattahoochee will not be affected. In the event that a withdrawal permit is obtained, the connection with the City of Atlanta will be maintained for emergency service.
- 9) The Still Branch Creek Reservoir is located outside of the District and is owned by the City of Griffin in Spalding County. The reservoir serves Pike and Spalding Counties as well as Coweta County. Coweta County has a purchase contract for 3.0 PDD-MGD of finished water (2012) from the City of Griffin which increases to 5.0 PDD-MGD on July 1, 2022.

**COWETA COUNTY - WATER (Page 2 of 2)**

**Phasing Plan**

Facilities (Note 10)	Existing (2021) Permitted Plant Capacity (PD-MGD)	By 2040 Plant Capacity at End of Period (PD-MGD)
<b>Chattahoochee Basin</b>		
CCWSA B.T. Brown WTP (Note 11)	6.4	26.9
<b>Chattahoochee/Flint Basins</b>		
Newnan Hershall Norred WTP	14.0	18.6
<b>Flint Basin</b>		
Senoia WTP (Note 12)	0.45	0.45
Proposed Senoia WTP #2	0	1.5
<b>Groundwater</b>		
Senoia (Note 13)	<del>-0.233</del> 0.119	<del>-0.233</del> 0.119
CCWSA Murphy Well	0.504	0.504
<b>Total Capacity (PD-MGD)</b>	<del>21.6</del> 21.5	<del>46.7</del> 48.1

Notes:

- 10) The schedule shown above is intended to be a general guideline to identify general expansion needs. Expansion capacity may be required sooner or later than indicated depending on local population and employment growth, water service extensions and other planning variables. Specific conditions for withdrawal and operation permits will be determined by Georgia EPD.
- 11) The B.T. Brown WTP should be expanded to 26.9 PD-MGD by 2040 to fully utilize the yield of B.T. Brown Reservoir.
- 12) The City of Senoia has a withdrawal permit with a monthly limit of 0.3 MGD from Hutchins Lake and a WTP with a total capacity of 0.45 PD-MGD. The City will need to increase their water withdrawal permit in order to fully utilize the plant capacity.
- 13) **Groundwater wells will remain in service as long as practicable.**

**Interconnections**

Maintain existing interconnections and water supply agreements with City of Atlanta, City of Griffin and additional interconnections as necessary.



## Metropolitan North Georgia Water Planning District

International Tower | 229 Peachtree St., NE | Suite 100 | Atlanta, GA 30303

TO: Executive Committee

FROM: Metro Water District Staff

DATE: June 3, 2026

RE: Plan Amendment Process Documentation and Staff Recommendation  
(City of Senoia)

---

The Metropolitan North Georgia Water Planning District received a request from the City of Senoia to modify the Water Resources Management Plan. According to the Plan Amendment Guidelines adopted by the Board on August 28, 2013, District staff are required to provide the Executive Committee with a category recommendation concerning the plan amendment request prior to the meeting. Please find the following summary of the amendment request along with the District staff recommendation.

**Amendment Request:** Appendix B, Coweta County - Water

**Local Jurisdiction:** City of Senoia

**Description:** The City of Senoia requests that Appendix B, Coweta County - Water be revised to include a new surface water withdrawal and a new water treatment plant within the Line Creek watershed. The intent is to add additional surface water withdrawal and treatment capacity for a peak day equal to 1.5 mgd. The additional proposed treatment capacity would be constructed over the planning period, at the existing facility or a new site, with the potential for 2-phase construction such as two (2) 0.750 mgd phases. The City of Senoia currently has a withdrawal permit with a monthly limit of 0.3 MGD from Hutchins Lake and a water treatment plant with a total capacity of 0.45 PD-MGD. The new withdrawal will allow the City to once again utilize the full capacity of the existing Senoia WTP. Additionally, the groundwater capacity for the City will be reduced to reflect the recent decommissioning of two wells.

Additional background is provided in the attached letter.

**Staff Recommendation:**

District staff recommend this request be categorized as a major amendment and subject to a 30-day public comment period because modification of the plan is local in nature but may be objected to by other local parties.



ENVIRONMENTAL PROTECTION DIVISION

Jeffrey W. Cown, Director

Watershed Protection Branch

2 Martin Luther King, Jr. Drive  
Suite 1052, East Tower  
Atlanta, Georgia 30334  
404-463-1511

01/27/2025

Ms. Jessie Cox  
City of Senoia  
PO Box 310  
Senoia, GA 30276

Re: Groundwater Withdrawal Permit No. 038-0006

Dear Ms. Cox:

In accordance with the Georgia Groundwater Use Act, as amended, a Modified permit to withdraw groundwater has been issued by the Division and is hereby enclosed. Please read your permit and note that your total system groundwater production limits are:

**0.119 million gallons per day (mgd) monthly average and 0.119 mgd annual average,**

from two well(s) in the Crystalline Rock aquifer(s). Also, please read the Standard Conditions and Special Conditions contained within the permit. This permit will expire on the **19th day of April 2033** and must be renewed prior to the expiration date. Any change in the withdrawal limits or conditions under which your permit was issued will require a permit modification, see Chapter 391-3-2-.06, paragraph 6 of the Rules for specifics.

Please be aware that you are required to submit Groundwater Use Reports (GWURs) on a monthly basis, which must be sent to EPD by the 10<sup>th</sup> day of the following month. The current "Monthly Groundwater Use Reporting Form" is available from the EPD website at: (<https://epd.georgia.gov/water-withdrawal-permitting-forms>). Please send each completed GWUR to:

[ground.water@dnr.ga.gov](mailto:ground.water@dnr.ga.gov)

Or

Georgia Environmental Protection Division  
Water Supply Program  
**Groundwater Withdrawal Unit**  
2 Martin Luther King Jr. Dr., S.E.  
East Floyd Towers, Suite 1052  
Atlanta, Georgia 30334

If you have any further questions, please call me at 470-524-0567, or email me at [bill.frechette@dnr.ga.gov](mailto:bill.frechette@dnr.ga.gov).

Sincerely,

*William Frechette*

William Frechette  
Unit Manager  
Water Supply Program - Groundwater Unit

Enclosure

cc: Mountain District Office, EPD

PERMIT NO. 038-0006  
ISSUANCE DATE: 01/27/2025



# GEORGIA

DEPARTMENT OF NATURAL RESOURCES

## ENVIRONMENTAL PROTECTION DIVISION

### PERMIT TO USE GROUNDWATER

PERMIT HOLDER'S NAME: **City of Senoia**  
PERMIT HOLDER'S ADDRESS: **PO Box 310, Senoia, GA 30276**  
COUNTY: **Coweta County**

In accordance with the Provisions of the Groundwater Use Act, (O.C.G.A § 12-5-90 et seq.) as amended, and the Rules and Regulations for Groundwater Use, Chapter 391-3-2, promulgated pursuant thereto, this Permit is issued to withdraw, obtain, or utilize a maximum system wide total of groundwater in the amount of:

**0.119** million gallons per day monthly average and **0.119** million gallons per day annual average;

from **two** well(s) located near/at **Senoia, Georgia – Coweta County** for the purpose of a consumptive use for **a central water supply**.

This Permit is conditioned upon the permit holder complying with all of the terms, conditions, and schedules of compliance specified on the attached pages, which are hereby made a part of this Permit.

In accordance with the application dated **April 9, 2024** and in conformity with the statements and supporting data entered therein or attached thereto, all of which are filed with the Environmental Protection Division (EPD) and are hereby made part of this Permit.

This permit is effective from the date first above written and is subject to revocation on evidence of noncompliance with any of the provisions of the Groundwater Use Act, as amended, or any of the Rules and Regulations promulgated pursuant thereto; or with any representation made in the above mentioned application or the statements and supporting data entered therein or attached thereto; or with any condition of this permit.

Absent prior revocation in accordance with the above language, this Permit will expire on the **19th day of April 2033**.



*Jeffrey W. Cown*

Jeffrey W. Cown, Director  
Environmental Protection Division

This Permit is conditioned upon the permit holder complying with the provisions of the Groundwater Use Act, as amended, or any of the Rules and Regulations promulgated pursuant thereto;

1) **GENERAL REQUIREMENTS**

- a) This Permit is valid for ground water withdrawal from the **Crystalline Rock** Aquifer(s). No other aquifer(s) can be used without the approval of the EPD.
- b) The withdrawal of groundwater is limited to the quantities and purpose of the water herein specified.
- c) Water associated with this Permit must not be withdrawn by, released for, or otherwise utilized by any other entity or for any other purpose, without first modifying this Permit.
- d) This Permit must not be transferred except with the approval of the EPD.
- e) The replacement of any permitted well must receive prior approval from the EPD.
- f) This permit supersedes any and all previous permits of the same permit number.

2) **PERMIT RENEWAL**

All permit holders desiring to renew a permit shall submit an application for renewal to the EPD Director within six (6) months of the permit's expiration.

3) **PERMIT MODIFICATION**

- a) The permit holder may seek modification of any of the terms of an unexpired permit upon written request to the EPD Director.
- b) The Georgia EPD has the authority to modify any groundwater withdrawal permit at any time.

4) **MONITORING AND REPORTING**

- a) If multiple aquifers are designated in Condition (1a) above, groundwater withdrawal from each aquifer must be reported separately, in addition to the total amount withdrawn from all wells. Each aquifer must be identified on the Groundwater Withdrawal Report, in addition to listing the well or wells that are producing from each aquifer. If a well is producing in more than one aquifer, it is to be noted.
- b) The Groundwater Withdrawal Report must be submitted MONTHLY in accordance with the following schedule:
  - Production between the first day of the month and the last day of the month will be submitted to EPD by the 10<sup>th</sup> day of the following month (ex. January 1<sup>st</sup> through January 31<sup>st</sup> groundwater withdrawal data will be reported to the EPD by February 10<sup>th</sup>).

4) **MONITORING AND REPORTING (Continued)**

- c) In accordance with the Groundwater Use Rules, 391-3-2-.08(1), a permit holder will measure and record the static and pumping levels of each aquifer utilized and the date the water levels were measured on a semi-annual basis, submitting the results to EPD. Semi-Annual Water Level measurements must be collected from the highest yielding wells, using the same wells for each reporting period and preferably taking the measurements during the same two months of the year (six months apart). One well should be measured for every five permitted wells (i.e., if you have between one and five permitted wells, conduct measurements for one well; if you have between six and ten permitted wells, conduct measurements from two of the permitted wells, etc.).
- d) In accordance with the Groundwater Use Rules, 391-3-2-.08(2), a permit holder will analyze a raw groundwater sample for specific conductance on an annual basis. Analysis for specific conductance must be conducted in accordance with 40 Code of Federal Regulations, Part 141.89. A raw groundwater sample must be collected for every five permitted wells (i.e., if you have between one and five permitted wells, collect one raw groundwater sample for analysis; if you have between six and ten permitted wells, collect a raw groundwater sample from two of the permitted wells, etc.). The groundwater samples will be collected from the highest yielding wells. The results must be submitted to EPD and include the date sampled, well number, temperature of water sample at time of testing, the specific conductance result, and the units of measurement.

5) **WATER PLANNING REQUIREMENTS**

- a) This groundwater withdrawal permit and any future modifications or re-issuances of such, is conditioned upon implementation of the permit holder's Water Conservation Plan developed in accordance with the Rules and Regulations for Groundwater Use, Chapter 391-3-2, and the Georgia Water Stewardship Act. It should be regularly updated to be consistent with current EPD guidelines.
- b) The permit holder must submit a Water Conservation Progress Report to the Division five years after permit issuance, and every five years thereafter.
- c) In accordance with the Rules for Public Water Systems to Improve Water Supply Efficiency (391-3-33), Public Water Systems that regularly serve 3,300 or more individuals must submit an annual Water Audit to EPD by March 1 of each year. Any future permit action is conditional upon the demonstration of progress toward increased water efficiency. The permit holder must maintain ongoing compliance with the following:
  - 1. Establishment of a Water Loss Control Program and associated goals to set measures of water supply efficiency.
  - 2. Demonstration of progress toward increased water efficiency using the measures established.

5) **WATER PLANNING REQUIREMENTS (Continued)**

- d) The permit holder must abide by all applicable drought response requirements, which include but are not limited to the Georgia Drought Management Rule (391-3-30), the Georgia Water Stewardship Act, and the permit holder's Drought Contingency Plan.
- e) The permit holder must maintain ongoing compliance with applicable **Metropolitan North Georgia Water Planning District** Regional Water Plan requirements.

6) **SPECIAL CONDITIONS**

- a) To ensure progress toward increasing water supply efficiency, the permittee must provide a progress report every year starting one (1) year from the permit issuance date, based on the permittee's Water Loss Control Plan, on efforts made to reduce Water Loss within the permittee's system. The progress reports must provide a description of implemented measures and how the implemented measures have reduced the system's Non-Revenue Water. This annual report must continue to be submitted every year to ensure continued progress.
- b) The permit holder will cooperate with the Georgia EPD in the coordination of its water withdrawal requirements associated with this Groundwater Withdrawal Permit and the following additional Water Withdrawal Permit(s):
  - **038-1102-05**



**GEORGIA**  
DEPARTMENT OF NATURAL RESOURCES

**ENVIRONMENTAL PROTECTION DIVISION**

**Richard E. Dunn, Director**

**Watershed Protection Branch**  
2 Martin Luther King, Jr. Drive  
Suite 1152, East Tower  
Atlanta, Georgia 30334  
404-463-1511

Aug 31, 2022

Mr. Harold Simmons, City Manager  
City of Senoia  
Post Office Box 310  
Senoia, Georgia 30276-0310

RE: Surface Water Withdrawal Permit Application (Renewal)  
Permit # 038-1102-05  
Source: Hutchins Lake in Flint River Basin  
Permit Limits: 0.30 mgd max 24-hr day/ 0.30 mgd monthly average

Dear Mr. Simmons:

In accordance with the Georgia Water Quality Control Act, as amended, the above-referenced permit to withdraw surface water from Hutchins Lake in the Flint River Basin has been issued by the Division and is hereby enclosed. The conditions of compliance are provided in this permit. Specifically, please note that Standard Condition (4)(b) requires the permit holder to submit a monthly Surface Water Withdrawal Report to the Division within the first ten (10) days of the calendar month for the previous month. The Report must show daily raw water withdrawals associated with this permit. A copy of this reporting form is included.

Please also note that exceeding the maximum 24-hour or monthly average withdrawal limitations is a permit violation and must be reported to the Water Protection Branch by telephone at (404) 463-1511 within 48 hours and confirmed in writing within ten (10) days. Failure to comply with any of the provisions of the Permit may make the permit holder liable for civil penalties as provided by the Act.

If you have any questions, please contact me via email at [kelli-ann.sottile@dnr.ga.gov](mailto:kelli-ann.sottile@dnr.ga.gov).

Sincerely,

*Kelli-Ann Sottile Schrage*

Kelli-Ann Sottile Schrage  
Surface Water Unit, Manager  
Water Supply Program

Enclosure(s)

PERMIT NO. 038-1102-05  
ISSUANCE DATE: Aug 31, 2022



# GEORGIA

DEPARTMENT OF NATURAL RESOURCES

## ENVIRONMENTAL PROTECTION DIVISION

### PERMIT TO WITHDRAW, DIVERT OR IMPOUND SURFACE WATER

PERMIT HOLDER'S NAME **City of Senoia**  
PERMIT HOLDER'S ADDRESS **P. O. Box 310, Senoia, Georgia 30276**  
COUNTY: **Coweta**

In accordance with the provisions of the Georgia Water Quality Control Act, (O.C.G.A. § 12-5-20 et seq.) as amended, and the Rules and Regulations for Water Quality Control, Chapter 391-3-6, promulgated pursuant thereto, this permit is issued to withdraw surface water from Hutchins Lake in the Flint River Basin for the purpose of municipal water supply.

**The City of Senoia (Permittee)** must comply with the following limitations:

- (1) Maximum 24 hour: Withdrawal 0.30 MGD; Impoundment \_\_\_ MGD; Diversion \_\_\_ MGD
- (2) Not to exceed a monthly average of 0.30 MGD

This Permit is conditioned upon the permit holder complying with the attached **Standard Conditions** (1 through 5) and the additional **Special Conditions** (8 through 13) which are hereby made a part of this Permit.

In accordance with the application dated 12/9/2021 and in conformity with the statements and supporting data entered therein or attached thereto, all of which are filed with the Environmental Protection Division of the Department of Natural Resources and are hereby made part of this Permit.

This Permit is effective from the date first above written and is subject to revocation pursuant to the Georgia Water Quality Control Act, as amended, O.C.G.A. § 12-5-31 (k).

Absent prior revocation in accordance with the above language, this Permit will expire **ten (10) years** from the issuance date on this permit.



Richard E. Dunn, Director  
Environmental Protection Division

This permit is conditioned upon the permittee complying with the provisions of the Water Quality Control Act, as amended, or any of the Rules and Regulations promulgated thereto;

**STANDARD CONDITIONS**

1) GENERAL PERMIT CHARACTERISTICS

- a) The use of surface water is limited to the quantities and purposes as specified herein.
- b) Water associated with this Permit must not be withdrawn by, released for, or otherwise utilized by any other entity or for any other purpose without first modifying this Permit.
- c) This permit must not be transferred except with the approval of the Georgia Environmental Protection Division.
- d) This permit supersedes any and all previous permits of the same permit number.

2) PERMIT RENEWAL

All permittees desiring to renew a permit must submit an application for renewal to the Director within six (6) months prior to its expiration.

3) PERMIT MODIFICATION

- a) The permittee may seek modification of any of the terms of an unexpired permit upon written request to the Director.
- b) The Georgia Environmental Protection Division (EPD) has the authority to modify any surface water withdrawal permit at any time.

4) MONITORING AND REPORTING

- a) The permittee must submit annually to the EPD, within 30 days of completion of the calendar year, a report listing for each month of the previous year:
  - 1. The gallons per day withdrawn, based on an average of the daily withdrawals for the month; and,
  - 2. The maximum 24-hour withdrawal.
- b) In addition to Condition 4a, the permittee must submit to EPD within ten (10) days of completion of the calendar month, a monthly Surface Water Withdrawal Report for the previous month showing daily raw water withdrawals associated with this Permit.

5) WATER PLANNING REQUIREMENTS

- a) The permittee must abide by all applicable water conservation requirements, which may include but are not limited to submission of a Water Conservation Plan for EPD approval and submission of a five-year Water Conservation Progress Report in accordance with Georgia Rules and Regulations (Rule) 391-3-6-.07. The Progress Report must include all actions and improvements made to conserve water and reduce water loss and shall be submitted for EPD review by five (5) years from the issuance date of this permit.
- b) The permittee must abide by all applicable drought response requirements, which include but are not limited to the Georgia Drought Management Rule (Rule 391-3-30) and the permittee's Drought Contingency Plan.
- c) The permittee must maintain ongoing compliance with applicable "Metro North Georgia Water Planning District" requirements.

**SYSTEM INFORMATION**

- 6) The Permittee owns and operates a water system in Coweta County for the purpose of municipal water supply. The system consists of a surface water withdrawal under this permit, four (4) active ground water wells with permitted capacity of 233,000 gallons per day under Groundwater Permit No. 038-0006, and a surface water treatment plant with a present permitted capacity of 300,000 gallons per day operating under Permit No. CS0770003. The system also includes one (1) clearwell with a total capacity of 100,000 gallons, two (2) elevated storage tanks with a total capacity of 700,000 gallons, and a distribution system consisting of 2-inch through 12-inch pipes. The permittee's surface water system is shown in Figure 1 of this permit.
- 7) In addition to the permitted surface and groundwater water withdrawals discussed above, the permittee also purchases water from Coweta County via two (2) metered connections within the system.

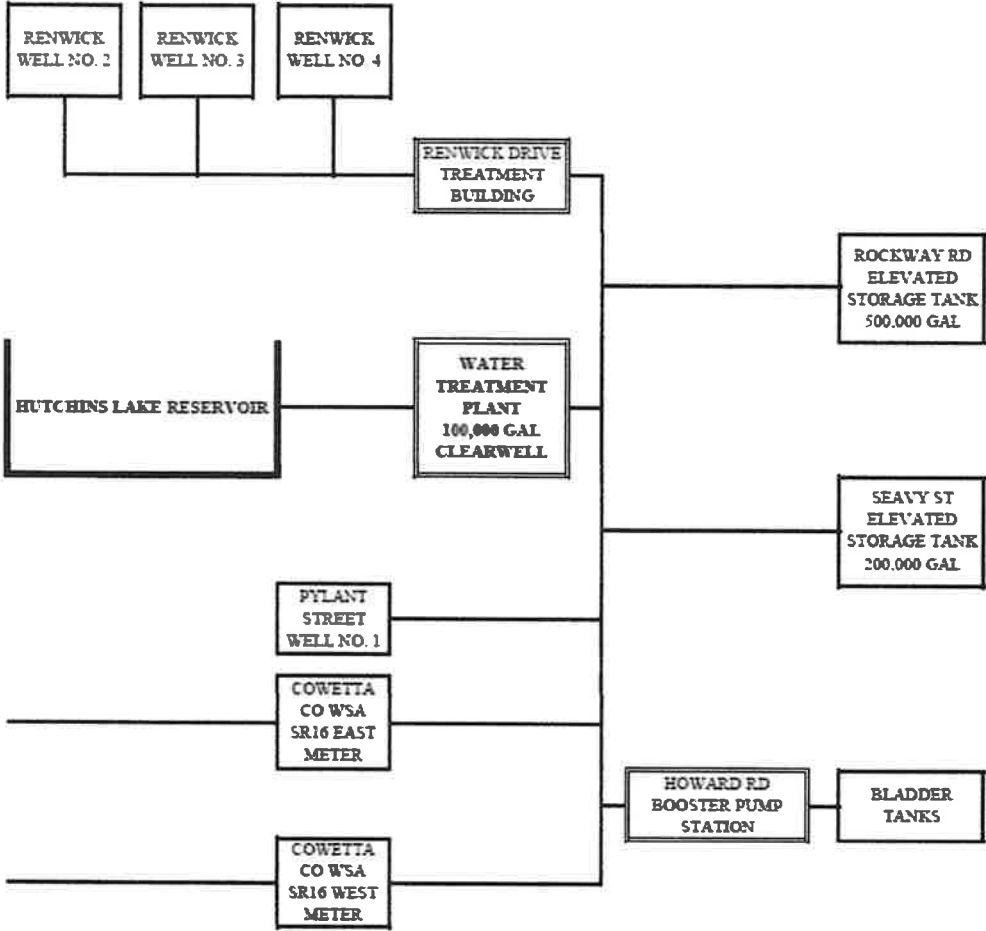
**SPECIAL CONDITIONS**

- 8) The permittee's water withdrawal is from Hutchins Lake. The intake structure is located approximately 200 feet west of Rockaway Road, Senoia, Georgia in Coweta County. All water withdrawn must be metered as it enters the Senoia Water Treatment Facility, and the withdrawal record must be maintained at the facility and reported to EPD.
- 9) The permittee must operate in accordance with all criteria for Water Supply Watersheds as outlined in Rule 391-3-16-.01, including the applicable Water Supply Watershed Protection Plan.

- 10) In accordance with Rule 391-3-33-.05, any future renewal or modification is conditioned upon the demonstration of progress towards increased water efficiency. The permittee must submit an annual Water Audit by March 1 of each year and maintain ongoing compliance with the following:
  - a) Establishment of a Water Loss Control Program and associated goals to set measures of water supply efficiency.
  - b) Demonstration of progress toward increased water efficiency using the measures established.
- 11) To ensure progress toward improved water supply efficiency, the permittee must provide a progress report every year starting one (1) year from this permit issuance date, based on the permittee's Water Loss Control Plan, on efforts made to reduce Water Loss within the permittee's system. The progress report must provide a description of implemented measures and how the implemented measures have reduced the system's Non-Revenue Water (NRW). This annual report must continue to be submitted every year to ensure increasing water efficiency.
- 12) The permittee must not transfer any water withdrawn via this permit to any entity operating outside the Flint River basin without EPD approval of such a transfer.
- 13) The permittee must cooperate with the EPD in the coordination of its water withdrawal requirements associated with this Permit and Groundwater Permit No. 038-0006.

**Figure 1**  
**(as provided by the applicant)**

CITY OF SENOLA  
WATER SYSTEM SCHEMATIC 2022





ENVIRONMENTAL PROTECTION DIVISION

**Richard E. Dunn, Director**

**Watershed Protection Branch**

2 Martin Luther King, Jr. Drive  
Suite 1152, East Tower  
Atlanta, Georgia 30334  
404-463-1511

MAR 27 2020

Honorable Charles F. Eichorst  
City of Senoia  
P.O. Box 310  
Senoia, GA 30276-0310

Re: **Senoia Water System**  
**WSID# 0770003**  
Coweta County

Dear Mayor Eichorst:

In accordance with the Georgia Safe Drinking Water Act of 1977, as passed by the Georgia General Assembly, and the Rules for Safe Drinking Water, Chapter 391-3-5, a permit to operate the Senoia Water System, a public water system located in Coweta County, Georgia has been issued by the Environmental Protection Division (EPD) and is hereby enclosed. The specific conditions for operation of the water system are outlined in the pages attached to the permit. **Please provide a copy of this permit to anyone directly involved in the operation or sample collection for this water system.**

The Rules for Safe Drinking Water, Chapter 391-3-5, specify the number and frequency of microbiological, chemical, and radiological samples that must be analyzed for your water system. These compliance samples must be analyzed by EPD's Laboratory or any other commercial laboratory certified by EPD to conduct the analyses. If you participate in EPD's "Drinking Water Laboratory and Related Services", sample bottles with instructions for sample collection, preservation, and return shipping will be mailed to you as sampling is required. If you do not utilize the services of EPD's Laboratory for testing, you are responsible for complying with all applicable monitoring schedules in the Rules for Safe Drinking Water. Please visit <http://gadinkingwater.net> to view your required monitoring schedules and other pertinent water system information.

**Please remember that all bacteriological and chemical samples, reports, and other information for this system that are submitted to EPD should be identified by the water system identification number, WSID# 0770003.**

Sincerely,

Peter C. Nwogu  
Drinking Water Unit Manager

Enclosure

cc: Drinking Water Permitting & Engineering Program, EPD  
Coweta County Health Department

PERMIT NO. CS0770003

ISSUE DATE: MAR 27 2020



# GEORGIA

DEPARTMENT OF NATURAL RESOURCES

## ENVIRONMENTAL PROTECTION DIVISION

### PERMIT TO OPERATE A PUBLIC WATER SYSTEM

In compliance with the provisions of the **GEORGIA SAFE DRINKING WATER ACT of 1977, O.C.G.A. 12-5-170 et. seq.**, and the **RULES, CHAPTER 391-3-5**, adopted pursuant to the ACT

**City of Senoia**

is issued a **PERMIT TO OPERATE A PUBLIC COMMUNITY WATER SYSTEM** named

**Senoia Water System**

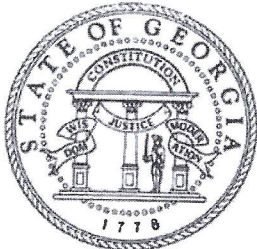
and located at

**Peachtree, Coweta County, Georgia**

**THIS PERMIT** to operate the above public water system shall become effective on the date shown above and shall have a fixed term of ten (10) years, absent any prior revocation or modification.

**THIS PERMIT** is issued subject to the terms, conditions and schedules of compliance as follows:

1. **THE PERMITTEE** shall at all times operate the public water system in full compliance with the **GEORGIA SAFE DRINKING WATER ACT of 1977**, and the **RULES, CHAPTER 391-3-5**, adopted under the ACT. **THE DIRECTOR** may modify, suspend or revoke this permit as provided therein.
2. **THIS PERMIT** is transferable only with a change of ownership. **THE PERMITTEE** shall notify the succeeding owner by letter of the existing permit and surrender the original permit to the Director. The succeeding owner shall apply to the Director for a permit transfer within 30 days of receiving title to the property.
3. **THIS PERMIT** is further subject to the terms, conditions and schedules of compliance specified on the attached pages.



Richard E. Dunn, Director  
Environmental Protection Division

STATE OF GEORGIA  
DEPARTMENT OF NATURAL RESOURCES  
ENVIRONMENTAL PROTECTION DIVISION

OWNER: City of Senoia

PERMIT NO.: CS0770003

SYSTEM: Senoia Water System

PERMIT CONDITIONS

4. **This permit is for the operation of a public water system using surface water as the principal source of supply, supplemented by four (4) wells.** The approved production rate(s) for the surface water treatment plant(s) and other approved sources of water are:

Hutchens Lake, Source 101  
Senoia Water Plant: 337.5 GPM (0.450 MGD) W/ 2 FILTERS @ 3 GPM/SQFT  
Coweta County Water System, WSID#0770042, Source 102  
Well #1 Pylant Street, Source 103  
Well #2 Renwick Drive, source 104  
Well #3 Tudor Way, Source 105  
Well #4 Renwick Drive, Source 106

Operation of the water plant(s) in excess of the approved production rate(s) in a twenty-four (24) hour period (starting at 0000 to midnight 2400 hours) is a violation of this permit. Violations must be reported to the Drinking Water Program by telephone within forty-eight (48) hours and confirmed in writing within ten (10) days. **The total amount of water produced must not exceed the limits imposed by your surface water withdrawal permit, #038-1102-05, or your groundwater withdrawal permit, #038-0005.**

5. The permittee must provide continuous disinfection by chlorinating all water distributed by the system to maintain a detectable residual of free chlorine in the recommended amount of 0.2 milligrams per liter in all parts of the distribution system, or as specified in Section 391-3-5-.14, as amended, of the Rules for Safe Drinking Water.

6. **The permittee shall analyze or have analyzed all microbiological and chemical samples required by the Rules for Safe Drinking Water, Chapter 391-3-5. Monitoring for each contaminant must be performed as scheduled by the Georgia Environmental Protection Division's (EPD) Watershed Compliance Program (WCP). The supplier must provide all test results to the WCP within the time frames established in the schedules.** The permittee may use the laboratory services of the EPD's certified laboratory or any other laboratory certified by the WCP to perform the specific analysis. If a laboratory other than the EPD's certified laboratory is used, the laboratory results must be submitted to the following address as specified in Section 391-3-5-.30:

Environmental Protection Division  
Watershed Protection Branch Compliance Program  
Drinking Water Compliance Unit  
2 Martin Luther King, Jr. Drive, SE, Suite 1152 East  
Atlanta, Georgia 30334

**The format used to report results must be approved by the WCP and must identify the system by the water system identification number, WSID# 0770003, and the laboratory performing the analysis. The laboratory's certification number must be included on the report. Results requiring immediate notification should be reported to the WCP by telephone at (404) 463-1511 or fax at (404) 651-9590.**

STATE OF GEORGIA  
DEPARTMENT OF NATURAL RESOURCES  
ENVIRONMENTAL PROTECTION DIVISION

OWNER: City of Senoia

PERMIT NO.: CS0770003

SYSTEM: Senoia Water System

7. Reports must be maintained by the permittee on the premises of the water system and be available for inspection. **A true and correct copy of the operation records and other reports must be sent to the following address, by the tenth day of the month following the month being reported, unless otherwise stated in Section 391-3-5-.30 or elsewhere in the Rules:**

Environmental Protection Division  
Drinking Water Permitting & Engineering Program  
Suite 1362, Floyd Towers East  
2 Martin Luther King, Jr. Drive, SE  
Atlanta, Georgia 30334  
Phone: (404) 656-2750  
Fax: (404) 651-9590

8. **The permittee shall ensure that this public water system is operated in compliance with the Georgia Certification of Water and Wastewater Treatment Plant Operators and Laboratory Analysts Act, as amended, and the Rules adopted thereunder. The certification classification must be consistent with the public water system classification specified in Section 391-3-5-.39 of the Rules for Safe Drinking Water.**
9. The permittee shall comply with O.C.G.A Sections 12-5-7 and 12-5-8 regarding limitations on outdoor irrigation, local variances from state restrictions on outdoor watering, and any rules and regulations related to drought management promulgated thereafter. This condition applies to any water system that holds a water withdrawal permit, or uses water provided by a system with a withdrawal permit.
10. Drinking water distributed by the permittee should not contain any impurity which will cause offense to the sense of sight, taste or smell and should not be excessively corrosive as to cause degradation of the water quality or deterioration of the distribution system, as specified in Section 391-3-5-.19 and .26 of the Rules for Safe Drinking Water.
11. The permittee is required to have a water conservation plan on file with the Division.
12. **The permittee is required to provide continuous fluoridation to all water distributed by the system, as specified in Section 391-3-5-.16 of the Rules for Safe Drinking Water.**
13. The permittee shall comply with Section 391-3-5-40, Wellhead Protection and the approved Wellhead Protection Plan, which is incorporated herein by reference as a condition of this permit.
14. The permittee shall comply with Section 391-3-5-.06 of the Rules for Safe Drinking Water and shall meter all water supply sources connected to the public water system and shall report the system's water usage to the EPD's Drinking Water Permitting & Engineering Program.
15. The permittee shall comply with Section 391-3-5-.10 of the Rules for Safe Drinking Water and shall meter all new services connected to public water systems, unless specifically directed otherwise by the Director.
16. This permit replaces all Permits to Operate a Public Water System previously issued for the operation of this public water system.